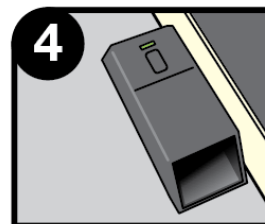
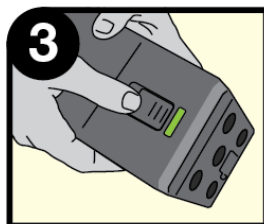
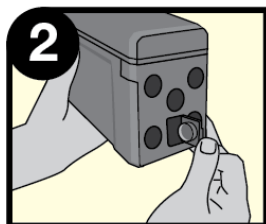
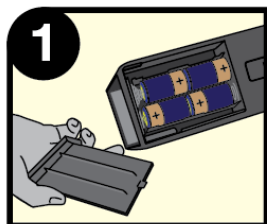




Electronic Rat Trap Instructions

TRAP OPERATION INSTRUCTIONS



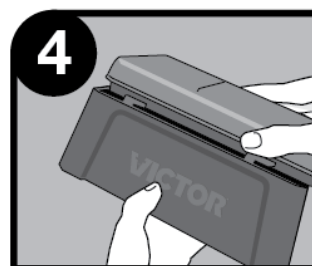
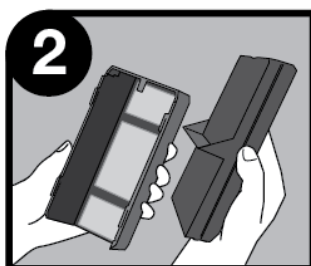
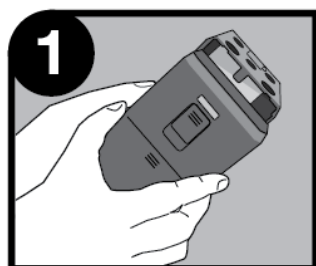
- 1.) Turn the switch to the "OFF" position and insert 4 C batteries into the battery compartment.
- 2.) Open the bait door and bait trap with peanut butter in the indicated bait cup.
- 3.) Turn the switch to the "ON" position. The green light will flash and the unit will buzz to indicate the unit has been enabled. Once a rodent is caught, a green light will flash for up to one week.
- 4.) Place the trap along a wall where rodent activity is present.

A red light indicates low battery life. Replace batteries.

TO DISPOSE OF RODENT

Turn the switch to "OFF". Open the trap by holding base of the trap with your left hand and sliding the top backwards with your right hand about 1". Pull top away from base. Properly discard rodent.

TRAP CLEANING INSTRUCTIONS



- 1.) Disassembly: Turn the switch to "OFF". Open the trap by holding base of the trap with your left hand and sliding the top backwards with your right hand about 1". Pull top away from base.
- 2.) The kill chamber is now ready for cleaning. Use soft bristle brush and warm soapy water to scrub inside of chamber if desired.
- 3.) Thoroughly dry interior and exterior of kill chamber prior to trap reassembly.
- 4.) Assembly: Hold base of the trap with your left hand and slide top into place by pushing forward with your right hand to reconnect.
- 5.) Trap is ready for use.